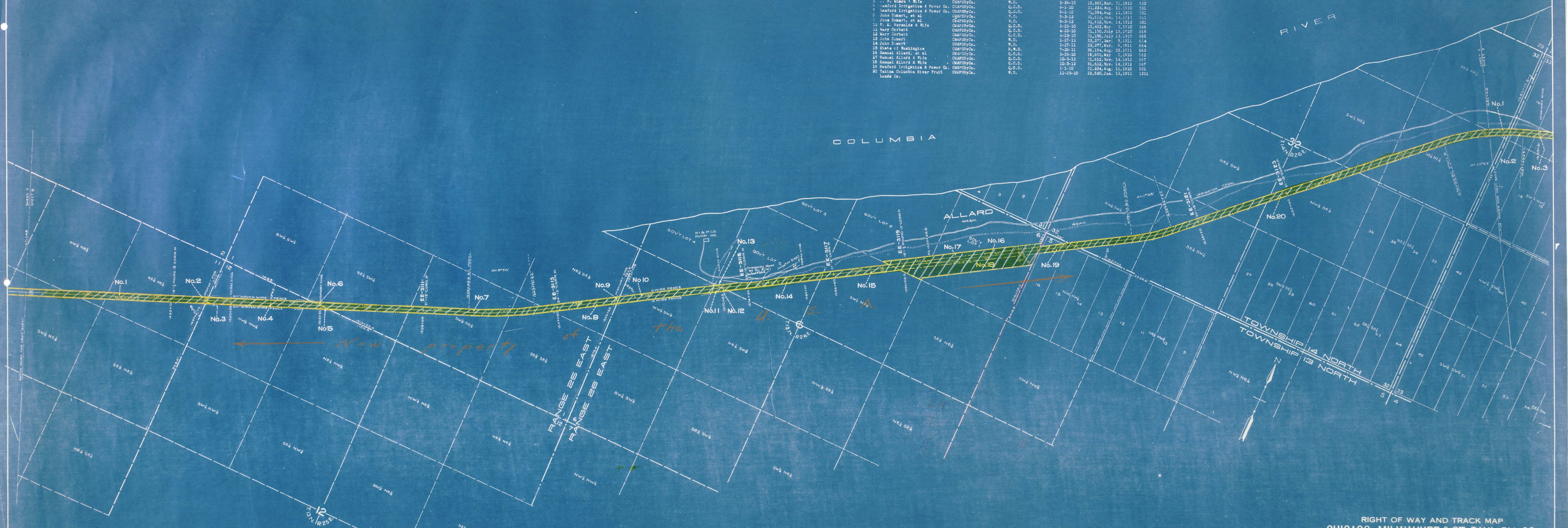


No.	GRANTOR	GRANTEE	INSTRUMENT	DATE	RECORD	CUSTODIAN'S NO.	REMARKS
1	Hanford Irrigation & Power Co.	CHASPERY Co.	Q.C.D.	6-1-10	21,384, Aug. 11, 1910	551	
2	Hanford Irrigation & Power Co.	CHASPERY Co.	Q.C.D.	6-1-10	21,384, Aug. 11, 1910	551	
3	J. P. Simon & Wife	CHASPERY Co.	W.D.	2-25-10	19,565, Mar. 31, 1910	633	
4	J. P. Simon & Wife	CHASPERY Co.	W.D.	2-25-10	19,565, Mar. 31, 1910	633	
5	J. P. Simon & Wife	CHASPERY Co.	W.D.	2-25-10	19,565, Mar. 31, 1910	633	
6	Hanford Irrigation & Power Co.	CHASPERY Co.	Q.C.D.	6-1-10	21,384, Aug. 11, 1910	551	
7	Hanford Irrigation & Power Co.	CHASPERY Co.	Q.C.D.	6-1-10	21,384, Aug. 11, 1910	551	
8	John Smart, et al	CHASPERY Co.	W.D.	9-1-12	31,012, Nov. 14, 1912	581	
9	John Smart, et al	CHASPERY Co.	W.D.	9-3-12	31,018, Nov. 14, 1912	581	
10	F. E. Reynolds & Wife	CHASPERY Co.	Q.C.D.	3-25-10	19,605, May 2, 1910	556	
11	Mary Corbett	CHASPERY Co.	Q.C.D.	4-23-10	21,350, July 13, 1910	655	
12	Mary Corbett	CHASPERY Co.	Q.C.D.	4-23-10	21,350, July 13, 1910	655	
13	John Smart	CHASPERY Co.	W.D.	1-27-11	29,377, Mar. 9, 1911	654	
14	John Smart	CHASPERY Co.	W.D.	1-27-11	29,377, Mar. 9, 1911	654	
15	State of Washington	CHASPERY Co.	R.W.D.	7-28-11	26,379, Aug. 28, 1911	653	
16	Samuel Allard, et al	CHASPERY Co.	Q.C.D.	3-25-10	19,605, May 2, 1910	552	
17	Samuel Allard & Wife	CHASPERY Co.	Q.C.D.	10-3-12	31,012, Nov. 14, 1912	657	
18	Samuel Allard & Wife	CHASPERY Co.	Q.C.D.	10-3-12	31,012, Nov. 14, 1912	657	
19	Hanford Irrigation & Power Co.	CHASPERY Co.	Q.C.D.	6-1-10	21,384, Aug. 11, 1910	551	
20	Taitian Columbia River Fruit Lanes Co.	CHASPERY Co.	W.D.	11-25-10	22,530, Jan. 13, 1911	1251	



New property of the

**RIGHT OF WAY AND TRACK MAP
CHICAGO, MILWAUKEE & ST. PAUL RY. CO.**

OPERATED BY THE
CHICAGO, MILWAUKEE & ST. PAUL RY. CO.
COAST DIVISION PRIEST RAPIDS LINE
STATION 1471+48 TO STATION 1682+68

Sheet No. 8 of 12 sheets of C. M. & St. P. Ry. Co. Main Line
from survey station 1471+48 to survey station 1682+68
A. E. Lodge
Valuation Engineer

SCALE: 1 IN. = 4 MILES JUNE 20, 1918.
OFFICE OF VALUATION ENGINEER
CHICAGO, ILLINOIS.

V.W-B
8

Bentow